

Probabilistic Projections of HIV Prevalence Using Bayesian Melding

Leontine Alkema, Adrian E. Raftery, Samuel J. Clark ¹
University of Washington

Working Paper no. 07-01
Center for Studies in Demography and Ecology
University of Washington

January 5, 2007

¹Leontine Alkema is Graduate Student, Department of Statistics, and Shanahan fellow at the Center for Studies in Demography and Ecology, University of Washington, Seattle, WA 98195-4322 (Email: alkema@u.washington.edu), Adrian E. Raftery is Blumstein-Jordan Professor of Statistics and Sociology, University of Washington, Seattle, WA 98195-4320 (Email: raftery@u.washington.edu), and Samuel J. Clark is Assistant Professor, Department of Sociology, University of Washington, Seattle, WA 98195-3340 (Email: samclark@u.washington.edu). This work was partially supported by a seed grant from the Center for Statistics and the Social Sciences (CSSS) at the University of Washington. The authors are grateful to Jeff Eaton for research assistance and to Tim Brown, Peter Ghys, Nick Grassly, Eleanor Gouws, Meade Morgan, Josh Salomon and Karen Stanecki for helpful discussions. Alkema and Raftery thank the Institute of Information Theory and Automation, Prague, Czech Republic, for hospitality.

Abstract

The Joint United Nations Programme on HIV/AIDS (UNAIDS) has developed the Estimation and Projection Package (EPP) for making national estimates and short term projections of HIV prevalence based on observed prevalence trends in antenatal clinics. Understanding uncertainty in its projections and related quantities is important for more informed policy decision making. We propose using Bayesian melding to assess the uncertainty around the EPP predictions. Prevalence data as well as information on the input parameters of the EPP model are used to derive probabilistic HIV prevalence projections – a probability distribution on a set of future prevalence trajectories. We relate antenatal clinic prevalence to population prevalence and account for variability between clinics using a random effects model. Predictive intervals for clinic prevalence are derived for checking the model. We discuss predictions given by the EPP model and the results of the Bayesian melding procedure for Uganda where prevalence peaked at around 28% in 1990; the 95% prediction interval for 2010 ranges from 1% to 7%.

Keywords: Antenatal clinic prevalence; HIV Population prevalence estimation; Predictive distribution; Random effects model; UNAIDS Estimation and Projection Package; Uncertainty assessment.

Contents

1	Introduction	1
2	The Estimation and Projection Package	2
3	Bayesian Melding for the EPP Model	4
3.1	Bayesian Melding	4
3.2	Priors on Input Parameters	5
3.3	Likelihood for Population Prevalence	6
3.4	Assessing Model Fit: Predictive distribution for clinical prevalence	8
4	Results	9
5	Discussion	13

List of Figures

1	The influence of the parameters of the EPP model on the shape of the epidemic curve	3
2	Posterior distribution of urban HIV prevalence in Uganda over time	9
3	Sample from the posterior predictive distribution of urban HIV prevalence in Uganda in 2005 and 2010.	10
4	Posterior samples and prior densities of EPP input parameters for urban prevalence in Uganda	11
5	Sample from the joint posterior distribution of the rate of infection and the start year for urban prevalence in Uganda	12
6	Posterior urban prevalence in Uganda, based on increasing observation periods. . . .	12
7	Samples from the posterior predictive distributions of urban HIV prevalence in Uganda in 2010, based on increasing observation periods	13
8	Predictive distributions for two urban clinics in Uganda, compared with the actual observations	14

1 Introduction

In this article we propose a way to obtain probabilistic projections of HIV prevalence for generalized epidemics in countries with little detailed knowledge of HIV prevalence. Generalized HIV/AIDS epidemics are epidemics in which the disease is spread widely in the population. To qualify as generalized an epidemic must affect one percent or more of pregnant women (Ghys et al. 2004), and by this definition many countries in sub-Saharan Africa have generalized HIV/AIDS epidemics. In countries with high HIV prevalence the HIV epidemic has a big impact on the population, and prevalence predictions are necessary to understand and plan for the effects on the population in the future.

UNAIDS has to produce current estimates and short-term projections of HIV prevalence for all countries with significant HIV epidemics. To do this, it developed the Estimation and Projection Package (EPP). EPP is software that implements a differential equation model. It is designed to reproduce in a parsimonious way the overall dynamics of a generalized HIV epidemic. In order to meet the UNAIDS requirement to produce estimates and projections for all countries with more than one percent of pregnant women infected with HIV, the EPP model must be general, robust and very simple; simple because many countries with significant HIV epidemics have very little data to describe those epidemics. For most countries in sub-Saharan Africa the main, and often only, source of information on HIV prevalence is the prevalence of HIV among women who attend antenatal clinics. As a result, the EPP model is designed to produce past and future trends in HIV prevalence that are consistent with measured trends in antenatal clinic prevalence. For a small number of countries, larger quantities of higher quality data are available. It is conceivable that for those countries one could design a model that is better able to capture the complex dynamics revealed by the data. However, this would violate the requirement that a single consistent method be used to produce estimates and projections of HIV prevalence for all affected countries, and could confuse comparison of the estimates between countries and perhaps across time for the same country.

The EPP 2005 software and supporting documentation can be downloaded from www.unaids.org. EPP is used by UNAIDS, the World Health Organization (WHO), and a variety of national and other agencies to produce HIV prevalence estimates. EPP is often used in combination with Spectrum, an extended sex- and age-differentiated population model (Stover 2004; Stover et al. 2006). Spectrum uses the prevalence trends generated by EPP to produce annual sex- and age-specific HIV incidence, deaths and other quantities of interest. EPP and Spectrum together have been used to analyse the global impact of HIV/AIDS prevention and treatment programs, and WHO has proposed using their combined output to estimate the number of people in need of antiretroviral treatment.

Uncertainty is an inherent component of forecasts of future trends in HIV prevalence,

and understanding this uncertainty is crucial for policy decision making. In 2003 UNAIDS included information on uncertainty in its estimates and projections by calculating and presenting plausibility bounds (Grassly et al. 2004). These bounds were derived by combining the results of a bootstrap method with expert opinion regarding the range of possible epidemic curves. As noted by Morgan et al. (2006, p.iii77): “plausibility bounds do not represent and should not be interpreted as formal statistical confidence intervals”. A Bayesian framework solves this problem by providing a mechanism for including expert opinion while still producing formal statistical confidence intervals.

We propose Bayesian melding to obtain probabilistic projections of HIV prevalence. Bayesian melding was first developed to estimate the rate of increase of whale populations (Raftery et al. 1995; Poole and Raftery 2000) and was successfully applied to policy-making in that context. Bayesian melding fully accounts for information describing uncertainty in both the inputs and outputs of a deterministic model. In this paper we discuss the application of the Bayesian melding procedure to the EPP model. In Section 2 we describe the EPP model, in Section 3 we explain the Bayesian melding procedure and a random effects model for HIV prevalence, in Section 4 we present results for urban HIV prevalence in Uganda, and in Section 5 we discuss possible improvements to the methodology.

2 The Estimation and Projection Package

The Estimation and Projection Package (EPP) was developed by UNAIDS to satisfy two major constraints. First it has to be able to capture the main dynamics of an HIV epidemic in any country, often without detailed knowledge of the transmission patterns in that country, and second it has to be simple enough to be used by national planning officials in a wide variety of developing countries. The UNAIDS Reference Group on Estimates, Modeling and Projections (UNAIDS Reference Group on Estimates, Modelling and Projections 2002) recognized that there are many complex models that incorporate patterns of risk behavior and mixing and provide useful tools for understanding the spread and control of HIV. Many of these models are unsuitable for the task at hand, however, because they require a large number of biological and behavioral parameter values that are not available from all the countries that require estimates and projections of HIV prevalence.

UNAIDS has developed a simple epidemiological Susceptible-Infected model that satisfies these two constraints. The population at time t is divided into three groups, a not-at-risk group $X(t)$, an at-risk group $Z(t)$ and an infected group $Y(t)$. The model assumes a constant non-AIDS mortality rate μ and fertility rate b and does not represent migration or age structure. Time-evolving prevalence (the fraction of the population infected) is modeled by estimating four parameters, r , f_0 , t_0 and ϕ . The parameter r is the rate of infection, f_0 is the fraction of the population in the at-risk category at the start of the epidemic, t_0 is the

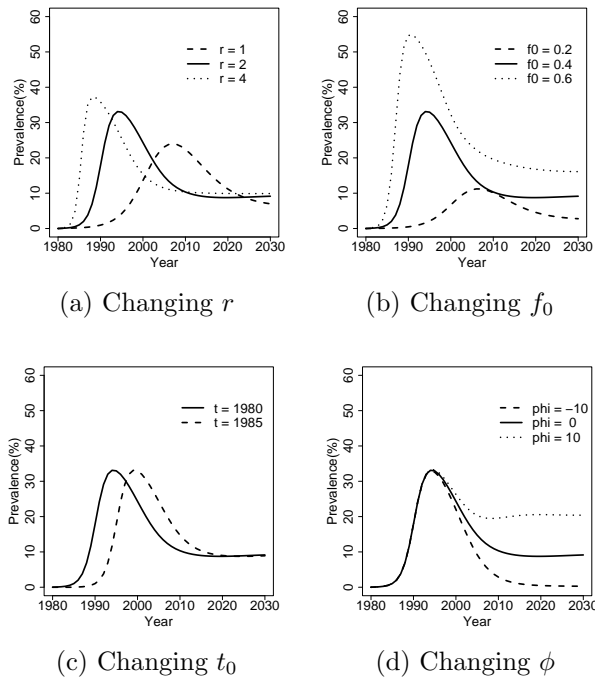


Figure 1: The influence of r , f_0 , t_0 or ϕ on the shape of the epidemic curve while holding other parameters fixed at the values $r = 2$, $f_0 = 0.4$, $t_0 = 1980$, $\phi = 0$.

start time of the epidemic and ϕ represents the behavioral response.

The influence of each of these parameters on the shape of the epidemic is shown in Figure 1. Note the standard overall shape of the epidemic in all of the plots. The fraction of the HIV negative population infected each year, or incidence, increases to a maximum and declines thereafter. As long as the number of new HIV infections is greater than the number of AIDS deaths, the prevalence rate increases. An epidemic peaks when the incidence and mortality rates are about equal. After the peak the prevalence rate comes down because the number of AIDS deaths continues to increase as a result of the lag between becoming infected and dying of AIDS. An epidemic stabilizes when the number of new HIV infections equals the number of AIDS deaths.

The greater the rate of infection r , the faster prevalence increases at the beginning of the epidemic, as can be seen from Figure 1a. If a fraction f of the population is at risk of HIV infection, every infected person infects $r \cdot f$ people each year ($r \cdot f$ is called the force of infection). The fraction of population in the at-risk category at the start of the epidemic f_0 influences when and at what prevalence the epidemic peaks. If a higher proportion of the population is initially at risk, the epidemic will peak at a higher level, as is apparent from Figure 1b. The epidemic is shown for two different start years in Figure 1c. Changing the start year, t_0 , does not change the shape of the epidemic, only its timing.

The behavioral response, ϕ , influences the level at which the epidemic levels off after the peak, as shown by Figure 1d. The parameter ϕ is positively related to steady state

prevalence. Negative values of ϕ correspond to a situation in which new members of the population change their behavior when they see others dying of AIDS, so that fewer of them enter the at-risk group. Positive values of ϕ correspond to the opposite situation in which a larger fraction of new members enter the at-risk group. This can be thought of as reflecting a gradual recruitment situation in which pockets of the population that were previously isolated, perhaps by geography or culture, are exposed to infection.

The rates at which the sizes of the groups change – through recruitment, behavior and infection – are described by three differential equations:

$$\begin{cases} \frac{dX(t)}{dt} = \left(1 - f\left(\frac{X(t)}{N(t)}, f_0, \phi\right)\right) E(t) - \mu X(t), \\ \frac{dZ(t)}{dt} = f\left(\frac{X(t)}{N(t)}, f_0, \phi\right) E(t) - \left(\mu + r\frac{Y(t)}{N(t)} + \lambda(t)\right) Z(t), \\ \frac{dY(t)}{dt} = \left(r\frac{Y(t)}{N(t)} + \lambda(t)\right) Z(t) - \int_0^t \left(r\frac{Y(\tau)}{N(\tau)} + \lambda(\tau)\right) Z(\tau) g(t - \tau) d\tau, \end{cases}$$

in which $N(t)$ is the total population, $N(t) = X(t) + Z(t) + Y(t)$, and μ is the non-HIV death rate. The function $g(\tau)$ specifies the HIV death rate τ years after infection. Survival after infection is assumed to have a Weibull(2.4, 10.5) distribution, so that the median survival time is 9 years. The start year of the epidemic is defined as the first year in which people are infected; the time at which a fraction λ_0 of the at-risk group Z moves to the infected group Y . Similar epidemics can be generated with either a larger, earlier pulse or a smaller, later pulse. We set $\lambda_0 = 0.001$ so that the start year is the year in which 0.1% of the at-risk population gets infected. The initial pulse is modeled such that $\lambda(t) = \lambda_0 \cdot \delta(t - t_0)$ where $\delta(t)$ is the Dirac Delta function, and so $\int_{-\infty}^{\infty} \lambda(t) Z(t) dt = \lambda_0 Z(t_0)$.

The population being modeled is aged 15+. New members of the population are the ones who survive to age 15. When entering the population, they are assigned to either the not-at-risk group $X(t)$ or the at-risk group $Z(t)$. The total number of new members at time t , $E(t)$, depends on the population size 15 years ago, the birth rate and the survival rate from birth to age 15. The birth rate is applied to both the uninfected and infected groups, taking into account the HIV-related fertility reduction experienced by the infected group and the transmission of HIV from mother to child. A fraction of the new 15-year-old members enter the at-risk group $Z(t)$ at time t . This fraction is given by $f\left(\frac{X(t)}{N(t)}, f_0, \phi\right)$ and depends on the fraction of the population in the not-at-risk group, the fraction initially at risk, and the behavioral response ϕ . The remainder of the new 15-year-olds enter the not-at-risk group $X(t)$.

3 Bayesian Melding for the EPP Model

3.1 Bayesian Melding

The EPP model transforms the input θ , consisting of the four input parameters (r, f_0, t_0, ϕ) , into a series of HIV prevalence rates, ρ , for the population during a given period. We

denote the EPP model by M , so that $\boldsymbol{\rho} = M(\boldsymbol{\theta})$. The Bayesian melding procedure combines information on inputs and outputs. Expert knowledge provides a prior distribution $q(\boldsymbol{\theta})$ for the inputs. The observed prevalence rates provide a likelihood $L(\boldsymbol{\rho})$ for the model output. Then the posterior distribution of the inputs is given by:

$$\pi(\boldsymbol{\theta}) \propto q(\boldsymbol{\theta})L(\boldsymbol{\theta}) = q(\boldsymbol{\theta})L(M(\boldsymbol{\theta})).$$

The inputs have prior density $q(\boldsymbol{\theta})$, and so $\boldsymbol{\rho} = M(\boldsymbol{\theta})$ also has a prior density because it is a transformation of $\boldsymbol{\theta}$. The posterior distribution of the output is given by

$$\pi(\boldsymbol{\rho}) \propto q^*(\boldsymbol{\rho})L(\boldsymbol{\rho}), \tag{1}$$

where $q^*(\boldsymbol{\rho})$ is the prior on the outputs induced by the prior on the inputs and the EPP model. It is not possible to write $q^*(\boldsymbol{\rho})$ analytically, and so we approximate it using Monte Carlo methods.

We approximate the posterior distribution in (1) by drawing a random sample from it using the Sampling Importance Resampling algorithm (Rubin 1987; Rubin 1988):

1. Sample $\{\boldsymbol{\theta}_1, \dots, \boldsymbol{\theta}_n\}$ from the input prior $q(\boldsymbol{\theta})$ on $\boldsymbol{\theta} = (r, f_0, t_0, \phi)$.
2. For each $\boldsymbol{\theta}_i$, determine the corresponding series of prevalence rates, $\boldsymbol{\rho}_i = M(\boldsymbol{\theta}_i)$, by running the EPP model. This gives a sample from the induced prior $q^*(\boldsymbol{\rho})$ on the outputs.
3. Form the sampling importance weights for each $\boldsymbol{\rho}_i$ and thus for each $\boldsymbol{\theta}_i$:

$$w_i = \frac{L(\boldsymbol{\rho}_i)}{\sum_{i=1}^n L(\boldsymbol{\rho}_i)}. \tag{2}$$

4. Sample from the discrete distribution of $\{\boldsymbol{\theta}_1, \dots, \boldsymbol{\theta}_n\}$ with probabilities w_i to approximate the posterior distribution for the inputs, and do the same for the outputs.

3.2 Priors on Input Parameters

The Bayesian melding procedure requires that we specify a joint prior distribution for the four input parameters $\boldsymbol{\theta} = (r, f_0, t_0, \phi)$. Separate sources of information are used to specify each of these priors, and so we define these four parameters to be independent *a priori*.

We assume that the rate of infection r can take any value between 0 and 15 with equal probability, $r \sim U[0, 15]$, meaning that the average number of people an infected person infects per year can range from zero to 15 times the fraction at risk. The start year of the epidemic t_0 has a uniform discrete distribution on $\{1970, 1981, \dots, 1990\}$.

The fraction initially at risk f_0 can be any value between zero and one, $f_0 \sim U[0, 1]$. We assume a uniform prior on $[0, 1]$ for the fraction entering the at-risk population $f\left(\frac{X(t)}{N(t)}, f_0, \phi\right)$.

These two priors together define a prior for the behavioral response ϕ . In the model the fraction entering the at-risk group $Z(t)$ is given by:

$$f\left(\frac{X(t)}{N(t)}, f_0, \phi\right) = \frac{\exp((\phi\chi(t)))}{\exp((\phi\chi(t))) - 1 + \frac{1}{f_0}}, \quad (3)$$

where $\chi(t)$ is the difference between the fraction in the not-at-risk group at time t , namely $X(t)/N(t)$, and the fraction $(1 - f_0)$ that was not at risk at the beginning of the epidemic, so that

$$\chi(t) = \frac{X(t)}{N(t)} - (1 - f_0). \quad (4)$$

Using (3), ϕ can be written in terms of the fractions entering the at-risk group and initially at risk. With uniform priors on both fractions, the behavioral response parameter has a logistic distribution with mean $\frac{1}{\chi} \log\left(\frac{1}{f_0} - 1\right)$ and variance $\frac{\pi^2}{3\chi^2}$, and with a prior estimate $f_0 = 0.5$, the behavioral response is centered around zero. The smaller the prior estimate of χ the more spread out the prior will be. We set $\chi = 0.1$ meaning that *a priori* we expect an average difference of 10% between the current and initial fractions not at risk.

3.3 Likelihood for Population Prevalence

In many of the countries with generalized HIV/AIDS epidemics, the data available for calibrating the EPP model consist of estimated prevalences among pregnant women at antenatal clinics. We will consider calibration of the EPP model in a country, or a part of a country, that is considered to be relatively homogeneous in terms of the pattern of the epidemic. UNAIDS often considers the urban areas of a country to form one such part, and the rural areas to form another part. Here we assume that the prevalence among the attendees at an antenatal clinic gives an unbiased estimate of population prevalence (see discussion in Section 5).

We now derive an output likelihood for the data, namely the antenatal clinic prevalences, given the model outputs, namely the population prevalences for each year during the observation period, $\boldsymbol{\rho} = (\rho_1, \dots, \rho_T)$, where ρ_t is the overall population prevalence in year t . The data consist of the number of infected women, Y_{st} , and the number of women tested, N_{st} , for clinic s in year t , for the S clinics $s = 1, \dots, S$. Data are available for clinic s for years $t = t(s, 1), \dots, t(s, T_s)$, where T_s is the number of years in which data were collected at clinic s .

We denote by γ_{st} the prevalence at clinic s in year t . We assume that $Y_{st} \sim \text{Binomial}(N_{st}, \gamma_{st})$, and that the Y_{st} are conditionally independent of each other given the γ_{st} . Antenatal clinic data often include repeated measurements at the same clinic. To account for this repeated measurement structure, we approximate the likelihood by modeling Y_{st} on the probit scale and using a hierarchical normal linear model. We let $W_{st} = \Phi^{-1}(x_{st})$, where $\Phi(\cdot)$ is the

standard normal cumulative distribution function, and $x_{st} = (Y_{st} + \frac{1}{2})/(N_{st} + 1)$. The constants $\frac{1}{2}$ and 1 in the definition of x_{st} are introduced to avoid problems with zeros, and they also have an approximate Bayesian justification because x_{st} would be the posterior mean of γ_{st} with a noninformative Jeffreys Beta($\frac{1}{2}, \frac{1}{2}$) prior distribution, in the absence of any other information.

Our model is then

$$W_{st} = \Phi^{-1}(\rho_t) + b_s + \varepsilon_{st}, \quad (5)$$

$$b_s \stackrel{\text{iid}}{\sim} N(0, \sigma^2), \quad (6)$$

$$\varepsilon_{st} \stackrel{\text{ind}}{\sim} N(0, v_{st}), \quad (7)$$

with

$$v_{st} = 2\pi \exp \{ \Phi^{-1}(\gamma_{st})^2 \} \gamma_{st}(1 - \gamma_{st})/N_{st}. \quad (8)$$

In our model (5), b_s is the clinic random effect for clinic s , assumed to be constant over time. The error term ε_{st} approximates the binomial variation. Equation (8) is an approximation derived from the binomial distribution of Y_{st} using the delta method.

Bayesian estimation of the model (5)–(7) requires only a prior for σ^2 , and we use a standard Inverse Gamma (α, β) prior. To assess values of α and β we considered the results of fitting the model to urban antenatal clinic data from nine countries in sub-Saharan Africa, and chose values of α and β that made this prior distribution spread out enough to amply cover the results of the model fits: $\alpha = 0.58$, $\beta = 93$.

We now use the model (5)–(7) to derive the likelihood of the data $\mathbf{W} = (\mathbf{W}_s : s = 1, \dots, S)$, where $\mathbf{W}_s = (W_{st} : t = t(s, 1), \dots, t(s, T_s))$, given the population prevalences $\boldsymbol{\rho} = (\rho_1, \dots, \rho_T)$. This likelihood follows by integrating out the clinic random effects, $\mathbf{b} = (b_1, \dots, b_S)$, and the random effects variance, σ^2 , as follows:

$$\begin{aligned} p(\mathbf{W}|\boldsymbol{\rho}) &= \int_{\sigma^2} \int_{\mathbf{b}} p(\mathbf{W}|\boldsymbol{\rho}, \mathbf{b}) p(\mathbf{b}|\sigma^2) d\mathbf{b} p(\sigma^2) d\sigma^2 \\ &= \int_{\sigma^2} \int_{\mathbf{b}} \left\{ \prod_{s=1}^S p(W_s|\boldsymbol{\rho}, b_s) p(b_s|\sigma^2) \right\} d\mathbf{b} p(\sigma^2) d\sigma^2 \\ &= \int_{\sigma^2} \left\{ \prod_{s=1}^S A_s(\sigma^2) \right\} p(\sigma^2) d\sigma^2, \end{aligned} \quad (9)$$

where $A_s(\sigma^2) = \int_{b_s} \prod_{t=1}^{T_s} p(W_{st}|\boldsymbol{\rho}, b_s) p(b_s|\sigma^2) db_s$.

The quantity $A_s(\sigma^2)$ can be evaluated analytically as follows. Let $d_{st} = W_{st} - \Phi^{-1}(\rho_t)$ and $\mathbf{d}_s = (d_{s,t(s,1)}, \dots, d_{s,t(s,T_s)})$. Then $\mathbf{d}_s = b_s \mathbf{1}_{T_s} + \boldsymbol{\varepsilon}_s$, where $\mathbf{1}_{T_s}$ is a T_s -vector of ones and $\boldsymbol{\varepsilon}_s = (\varepsilon_{s,t(s,1)}, \dots, \varepsilon_{s,t(s,T_s)})$. Thus $\mathbf{d}_s \sim \text{MVN}_{T_s}(\mathbf{0}, \boldsymbol{\Sigma}_s)$, where $\boldsymbol{\Sigma}_s = \sigma^2 \mathbf{J}_{T_s} + \mathbf{V}_s$, with \mathbf{J}_{T_s} defined as a $T_s \times T_s$ matrix all of whose elements are one, and $\mathbf{V}_s = \text{diag}(v_{st} : t = t(s, 1), \dots, t(s, T_s))$. It follows that $A_s(\sigma^2)$ is equal to the $\text{MVN}_{T_s}(\mathbf{0}, \boldsymbol{\Sigma}_s)$ density evaluated at \mathbf{d}_s . The error variance v_{st} is approximated as in (8) with $\gamma_{st} = x_{st}$.

We have now reduced the integral (9) to a one-dimensional integral. This has no analytic solution and we evaluate it using numerical quadrature, specifically the globally adaptive interval subdivision method (Piessens et al. 1983), as implemented in the R function `integrate`.

3.4 Assessing Model Fit: Predictive distribution for clinical prevalence

We assess the fit of the overall prediction procedure, including the EPP model itself, the Bayesian melding estimation method and the approximations we have used in deriving the likelihood, using out-of-sample predictive distributions. We are therefore interested in the predictive distribution of observed prevalence at clinic s at a future time $u > T$. Clinic-specific prediction intervals can be used to evaluate the predictive quality of the EPP model by forecasting prevalence using data before a given point in time and comparing prediction intervals with observed clinic prevalence after that point.

A sample from the posterior distribution of population prevalence for observed and future years, $p(\boldsymbol{\rho}|\mathbf{W})$, is given by the Bayesian melding output, $\boldsymbol{\rho}^{(1)}, \dots, \boldsymbol{\rho}^{(J)}$, where now $\boldsymbol{\rho}$ includes future prevalences up to year u , so that $\boldsymbol{\rho} = (\rho_1, \dots, \rho_T, \dots, \rho_u)$. The predictive distribution of the future transformed observed prevalence at clinic s and time u is

$$p(W_{su}|\mathbf{W}) = \int_{\boldsymbol{\rho}} \int_{b_s} p(W_{su}|b_s, \boldsymbol{\rho}) p(b_s|\boldsymbol{\rho}, \mathbf{W}) db_s p(\boldsymbol{\rho}|\mathbf{W}) d\boldsymbol{\rho}.$$

A Monte Carlo approximation to this is

$$\frac{1}{J} \sum_{j=1}^J p(W_{su}|b_s^{(j)}, \boldsymbol{\rho}_u^{(j)}),$$

where $b_s^{(j)}$ is one value sampled from $p(b_s|\boldsymbol{\rho}^{(j)}, \mathbf{W})$. This density is proportional to:

$$p(b_s|\boldsymbol{\rho}^{(j)}, \mathbf{W}) = p(b_s|\mathbf{d}_s^{(j)}) \tag{10}$$

$$\propto p(\mathbf{d}_s^{(j)}|b_s)p(b_s) \tag{11}$$

$$\propto \exp\left(-\frac{1}{2} \sum_{t=1}^{T_s} \frac{(d_{st}^{(j)} - b_s)^2}{v_{st}}\right) \left(\frac{1}{2}b_s^2 + \frac{1}{\beta}\right)^{-\alpha - \frac{1}{2}}, \tag{12}$$

because $\mathbf{d}_s^{(j)}|b_s \sim \text{MVN}_{T_s}(b_s \mathbf{1}_{T_s}, \mathbf{V}_s)$ and the prior distribution of b_s is proportional to $\left(\frac{1}{2}b_s^2 + \frac{1}{\beta}\right)^{-\alpha - \frac{1}{2}}$.

We sample from $p(b_s|\mathbf{d}_s^{(j)})$ using rejection sampling. Then the predictive distribution of the transformed observed prevalence is

$$W_{su}|b_s^{(j)}, \boldsymbol{\rho}_u^{(j)} \sim N(\omega_u^{(j)} + b_s^{(j)}, v_{su}^{(j)}),$$

where $\omega_u^{(j)} = \Phi^{-1}(\rho_u^{(j)})$, and $v_{su}^{(j)}$ is given by (8) with $\gamma_{su} = \Phi(\omega_u^{(j)} + b_s^{(j)})$. Transforming the prevalence back to its original scale gives a sample from the posterior predictive distribution of the future observed prevalence.

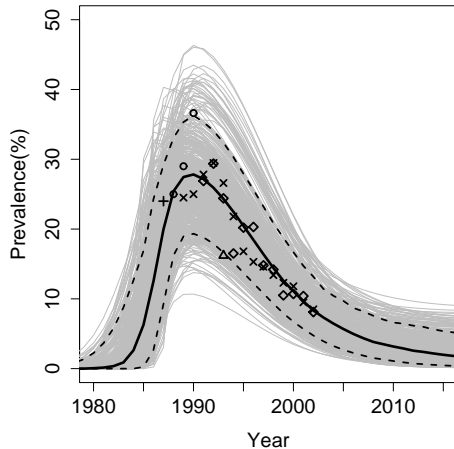


Figure 2: Posterior distribution of urban HIV prevalence in Uganda over time. Each dot is an observation, and dots with the same symbol correspond to repeated observations at the same clinic. Each grey line is a unique trajectory in the posterior sample of epidemic curves. The dashed lines are the 2.5% and 97.5% quantiles, and the solid black line is the median of the posterior sample.

4 Results

Data describing prevalence at urban and rural antenatal clinics are available from the Epidemiological Fact Sheets on HIV/AIDS and Sexually Transmitted Infections 2006 at <http://www.who.int/globalatlas/predefinedReports/EFS2006/index.asp>. As an example, we will discuss urban prevalence in Uganda, from where antenatal clinic prevalence data are available through 2002. Prevalence was observed at five clinics in Kampala and most observations were at two missionary hospitals. Prevalence has been falling since the early 1990s, as can be seen from Figure 2, which plots observed prevalence against time.

We ran the Bayesian melding procedure as described in the previous section for the five urban clinics in Uganda. We sampled 200,000 combinations of input parameters from their prior distribution. After calculating the likelihood for each of those inputs, we resampled 3,000 trajectories of which 508 were unique. The trajectory with the largest likelihood was resampled 107 times. Figure 2 shows the posterior sample of epidemic curves. The decrease in prevalence is projected to continue until around 2015 when it levels off between 0 and 5%, with a posterior median of about 1%. Figure 3 shows histograms of the samples of posterior predictive prevalence for 2005 and 2010. Although there is considerable uncertainty about the prevalence in any given future year, the results clearly predict a continuing overall decline in prevalence.

Figure 4 displays the prior density and the histogram of a sample from the posterior distribution of each of the four input parameters. The posterior mean of the rate of infection r is 4.5 (95% confidence interval [1.8, 12.4]), meaning that on average each year an infected

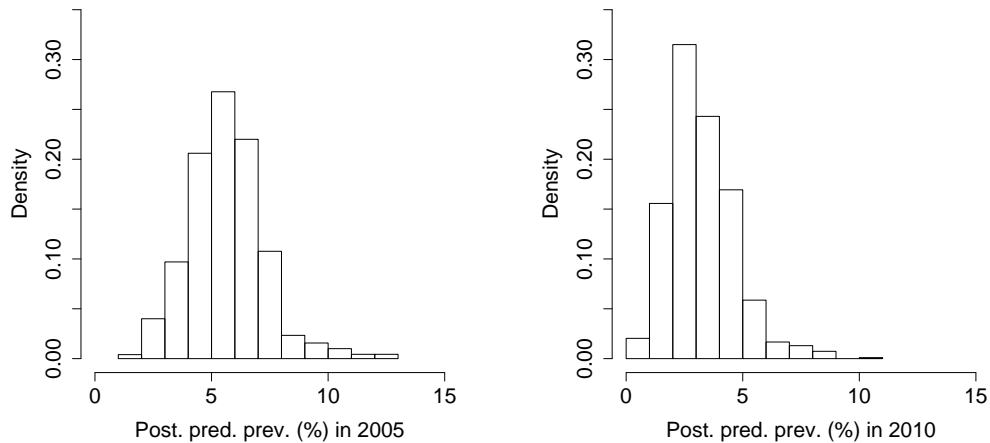


Figure 3: Sample from the posterior predictive distribution of urban HIV prevalence in Uganda in 2005 and 2010.

person infects a number of people equal to between 2 and 12 times the at-risk fraction of the population. The posterior median of the start year t_0 is 1979 ([1972, 1984]). The fraction initially at risk f_0 is centered around 0.33 ([0.22, 0.43]). The behavioral response ϕ is negative with a mean of -6.5 (95% confidence interval [-11, -4.6]). This means that as the number of AIDS deaths becomes significant, a smaller proportion of 15 year olds are being drawn into the at-risk group than at the start of the epidemic.

Even though they are independent *a priori*, the four parameters of the EPP model are correlated *a posteriori*. Often the posterior relationship between the parameters is nonlinear. For example in Figure 5 the rate of infection r is plotted against the start year of the epidemic t_0 . This shows the classic “banana shape” often observed in posterior distributions of parameters of deterministic simulation models of this kind; see Raftery et al. (1995) for other examples. In this case the banana shape of the posterior arises because the data contain substantial information about the product of the rate of increase r and the time since the start of the epidemic ($t - t_0$) but less information on either r or $(t - t_0)$ individually, as can be seen from Figure 4. As a result $r \cdot (t - t_0)$ is fairly well identified, leading roughly to a reflected hyperbola in the plot of the joint posterior distribution of r and t_0 .

To examine the predictive performance of the EPP model we ran the Bayesian melding procedure using data describing different truncated historical periods and compared the out-of-sample predicted prevalences to the observed prevalences. Figure 6 displays the prediction intervals for urban prevalence based on data through 1994, 1998 and 2002. Each grey line is a unique trajectory in the posterior sample of epidemic curves, the dotted lines are the 2.5% and 97.5% quantiles and the solid black line is the median of the posterior sample for each year.

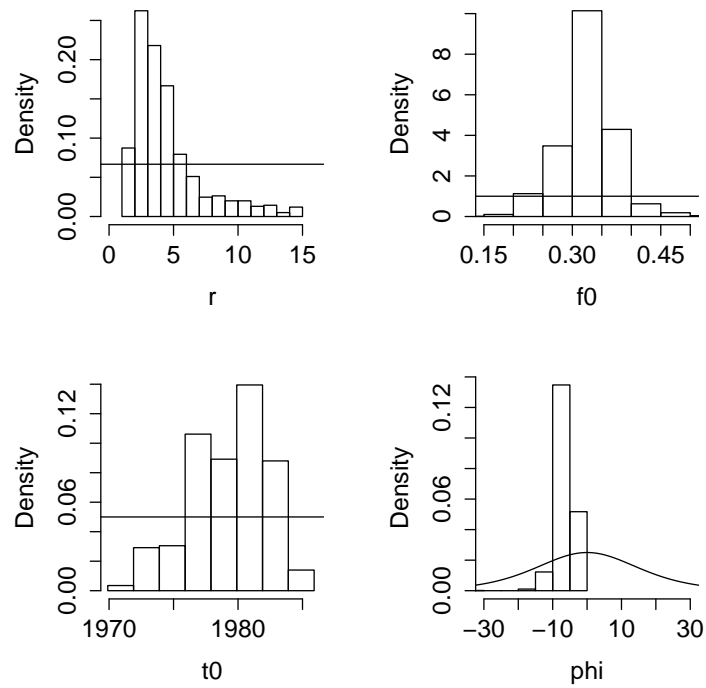


Figure 4: Posterior samples (histograms) and prior densities (solid lines) of input parameters for urban prevalence in Uganda: (a) r ; (b) f_0 ; (c) t_0 ; (d) ϕ

Figure 6a presents results based on observed prevalence through 1994 (the vertical line). At that time prevalence was predicted to be declining but there was substantial uncertainty about future prevalence. Based on the data through 1994 only, the 95% prediction interval for 2010 was [0%, 22%] with a median prediction of 1%. The subsequent clinic observations for 1995–2002 lay well within the posterior intervals for future overall prevalence. (In interpreting this result, it should be borne in mind that these bounds give predictive intervals for national urban prevalence and not for individual clinic observations.) Based on data through 1998, the posterior predictive distribution of prevalence in 2010 was much more concentrated: [0%, 6%] instead of [0%, 22%], although the posterior predictive median was unchanged at 1%; see Figure 6b. Again the subsequent observations lay within the posterior bounds for future overall prevalence. Using data through 2002, the 95% prediction interval for 2010 is [1%, 7%] with median predicted prevalence of 3%; see Figure 6c.

The 2010 posterior predictive distributions based on data through 1994, 1998 and 2002 are shown in Figure 7. As more data became available after 1998, prevalence was no longer predicted to decrease to zero.

To assess the fit of our overall modeling procedure, including the EPP model itself, the Bayesian melding method, and the approximations used in deriving the likelihood, we compared observed clinic prevalence with its predictive distribution, as described in Section

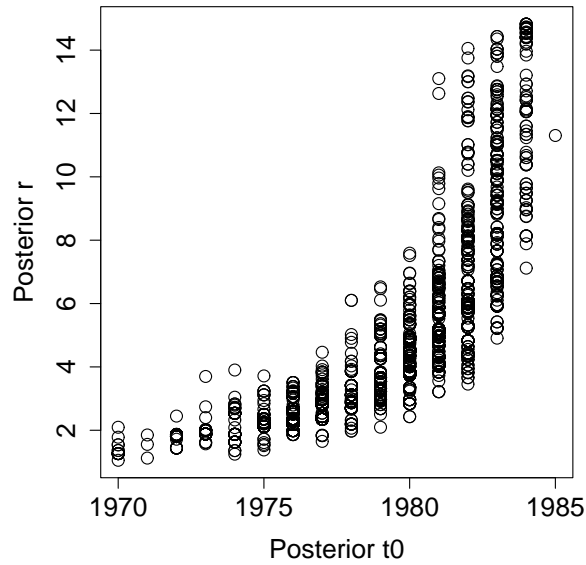


Figure 5: Sample from the joint posterior distribution of the rate of infection and the start year for urban prevalence in Uganda

3.4. Figure 8 shows the predictive intervals for the two missionary hospitals in Kampala, Nsambya and Rubaga – the other clinics do not have data after 1994. Figures 8a and 8b display prediction intervals based on data through 1994, and Figures 8c and 8d display the results using data through 1998. For both hospitals at both time points, the observed future prevalences lay within their prediction intervals. These results are consistent with the statement that the EPP model combined with the Bayesian melding procedure produces reasonable predictive intervals.

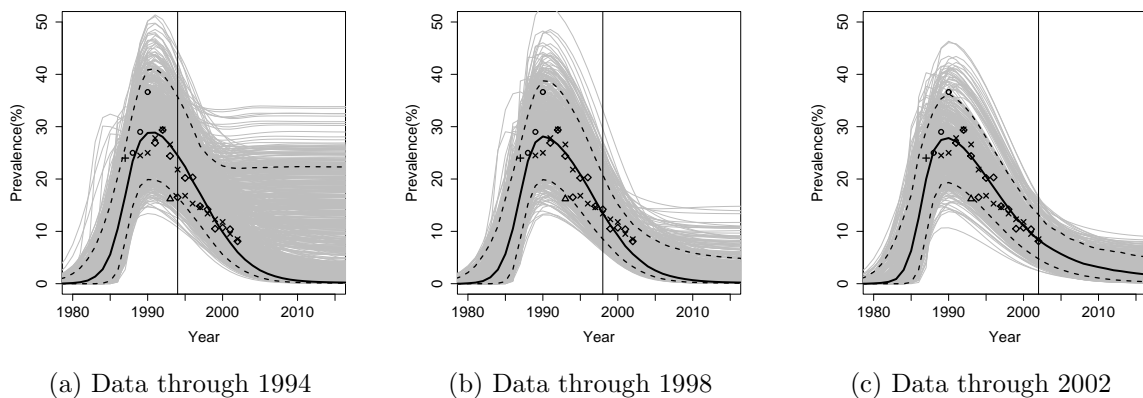


Figure 6: Posterior urban prevalence in Uganda, based on increasing observation periods.

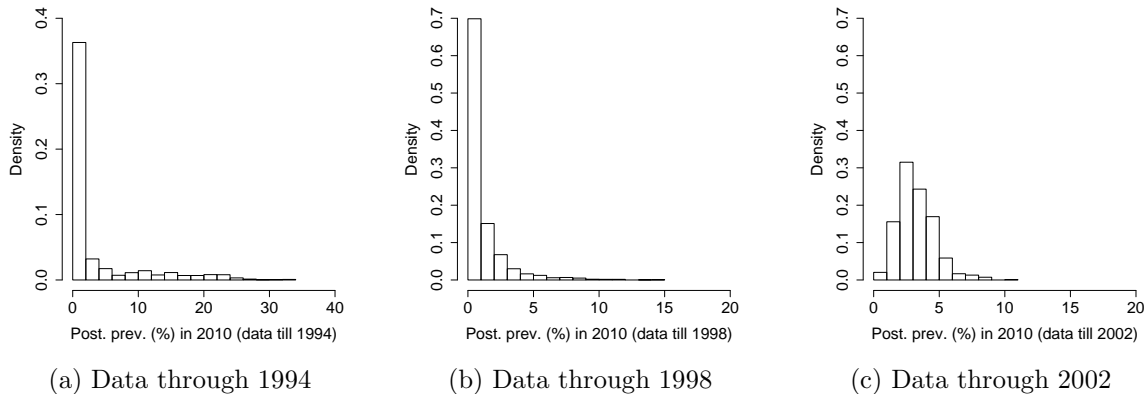


Figure 7: Histograms of samples from the posterior predictive distributions of urban HIV prevalence in Uganda in 2010, based on increasing observation periods.

5 Discussion

In this article we propose using Bayesian melding to obtain probabilistic projections of HIV prevalence from the EPP model developed by UNAIDS. EPP generates HIV prevalence trends for generalized epidemics and is typically fit to trends in the prevalence of women who attend antenatal clinics. For many countries in sub-Saharan Africa this is the only available information, a fact that precludes the use of more sophisticated models that require detailed information describing the behavioral and biological determinants of an HIV epidemic.

Using the Bayesian melding procedure, uncertainty about future prevalence is described by building probabilistic projections. A random effects model is used to account for differences between clinics, and out-of-sample predictive distributions are derived and compared with data to assess the predictive quality of the overall modeling procedure, including the EPP model and Bayesian melding.

We apply our method to Uganda where a relatively long series of antenatal clinic prevalence observations is available. The out-of-sample predictive performance of our method was good in this example, which lends support to the use of Bayesian melding for describing uncertainty. This also indicates that the relatively simple EPP model itself is effective at predicting prevalence, which is reassuring given how widely EPP is used. It also indicates that the approximations we used in deriving the likelihood have not unduly affected the procedure’s predictive performance. These include our use of a normal distribution on the probit scale to approximate the binomial distribution. It would be possible to build a model that instead uses the binomial response explicitly, but this would be considerably more complicated, and our results suggest that the gain in performance from doing so would be modest at best.

We base our prevalence predictions on data from antenatal clinics, which is the usual way in which the EPP model is used. However it has been convincingly argued that prevalence

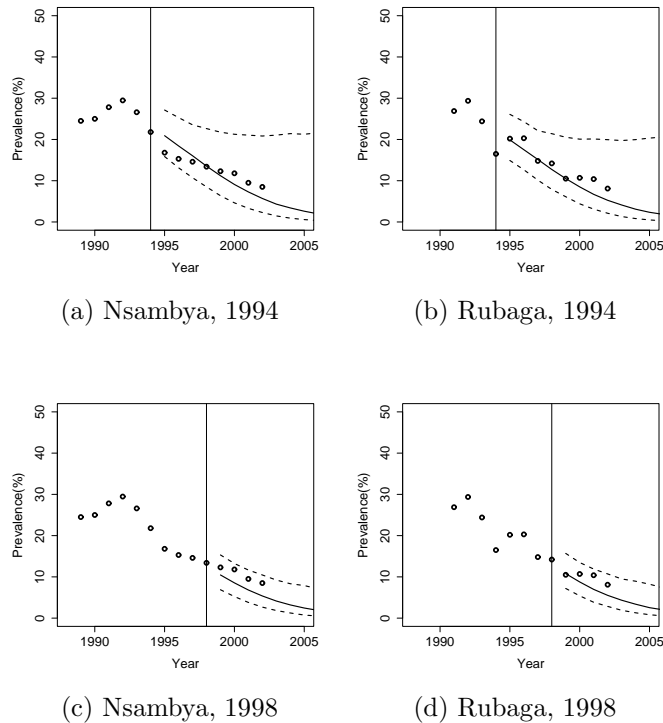


Figure 8: Predictive distributions for the two urban clinics Nsambya and Rubaga in Uganda based on data through 1994 and 1998, compared with the actual observations. The dotted lines are the 2.5% and 97.5% quantiles and the solid black line is the median of the predictive distribution for each year.

estimates from antenatal clinic data tend to be biased upward. This is true for various reasons including the fact that pregnant women tend to have higher HIV prevalence than the general population because they are by definition sexually active (Zaba et al. 2000), that urban antenatal clinics tend to be public rather than private and consequently oversample poorer women who are more likely to be HIV positive, and that rural antenatal clinics tend to underrepresent remote rural areas that tend to have lower prevalence and where a large fraction of the population often lives (Saphonn et al. 2002; Boerma et al. 2003).

Nationally representative population surveys have been proposed as an alternative to antenatal clinic data, particularly the Demographic and Health Surveys (DHS) (Boerma et al. 2003). For countries with national HIV prevalence estimates, a bias term was included in the 2005 version of EPP to calibrate the estimates that it produces. There are problems with this also. The DHS estimates themselves tend to be biased downward largely due to non-response. People not living in households, who are often more likely to be HIV positive, including sex workers living in brothels, are underrepresented because the DHS is a household survey (Lydie et al. 2004; Zaba et al. 2004; Mishra et al. 2006). The DHS estimates can also be highly variable, particularly in low prevalence countries where they may be based on a relatively small number of HIV positive cases.

Future work will extend Bayesian melding for EPP to take account of the DHS prevalence estimates and information describing possible bias in both antenatal clinic and DHS data. One possible way of doing this is to add a second likelihood based on DHS data and bias terms for both antenatal clinic and DHS data. Priors for the bias terms could be set based on data from other countries.

When constructing HIV projections in the future, the availability and possible effects of antiretroviral therapy (ART) will also need to be taken into account. So far the availability of ART is very limited and the effects negligible. Recently Botswana and South Africa were two of the first countries in sub-Saharan Africa to establish national ART programs. Other possible model improvements for EPP include additional parameters to model behavioral change; for example time variation in the force of infection to deal with rapid changes in behavior occurring in some countries (Ghys et al. 2006). It is not clear that making the model more complicated will improve its performance, however; whether or not this is the case in the presence of very limited data is an empirical question.

References

- Boerma, J. T., P. D. Ghys, and N. Walker (2003). Estimates of HIV-1 prevalence from national population-based surveys as a new gold standard. *Lancet* 362, 1929–1931.
- Ghys, P. D., T. Brown, N. C. Grassly, G. Garnett, K. A. Stanecki, J. Stover, and N. Walker (2004). The UNAIDS Estimation and Projection Package: A software package to estimate and project national HIV epidemics. *Sexual Transmitted Infections* 80(Suppl I), i5 – i9.
- Ghys, P. D., N. Walker, and G. P. Garnett (2006). Improving analysis of the size and dynamics of AIDS epidemics. *Sexually Transmitted Infections* 82(Suppl III), iii34 – iii40.
- Grassly, N. C., M. Morgan, N. Walker, G. Garnett, K. A. Stanecki, J. Stover, T. Brown, and P. D. Ghys (2004). Uncertainty in estimates of HIV/AIDS: the estimation and application of plausibility bounds. *Sexual Transmitted Infections* 80(Suppl I), i31 – i38.
- Lydie, N., N. J. Robinson, B. Ferry, E. Akam, M. De Loenzien, and S. Abega (2004). Study group on heterogeneity of HIV epidemics in African cities, mobility, sexual behavior and HIV infection in an urban population in Cameroon. *Journal of AIDS* 35, 67–74.
- Mishra, V., M. Vaessen, J. T. Boerma, F. Arnold, A. Way, B. Barrere, A. Cross, H. Rathavuth, and J. Sangha (2006). HIV testing in national population-based surveys: Experience from the Demographic and Health Surveys. *Bulletin of the World Health Organization* 84, 537–545.

- Morgan, M., N. Walker, E. Gouws, K. A. Stanecki, and J. Stover (2006). Improving analysis of the size and dynamics of AIDS epidemics. *Sexually Transmitted Infections* 82(Suppl III), iii71 – iii77.
- Piessens, R., E. deDoncker Kapenga, C. Uberhuber, and D. Kahaner (1983). Quadpack: a subroutine package for automatic integration. *Springer Verlag*.
- Poole, D. and A. E. Raftery (2000). Inference for deterministic simulation models: The Bayesian melding approach. *Journal of the American Statistical Association* 95, 1244–1255.
- Raftery, A. E., G. H. Givens, and J. E. Zeh (1995). Inference from a deterministic population dynamics model for bowhead whales (with discussion). *Journal of the American Statistical Association* 90, 402–416.
- Rubin, D. (1987). Comment on “The calculation of posterior distributions by data augmentation”, by M.Tanner and W.H.Wang. *Journal of the American Statistical Association* 82, 543–546.
- Rubin, D. (1988). Using the SIR algorithm to simulate posterior distributions. *Bayesian Statistics 3*, Eds. J.M. Bernardo, et al., Oxford, U.K.: Clarendon Press, 395–402.
- Saphonn, V., L. B. Hor, S. P. Ly, S. Chhuon, T. Saidel, and R. Detels (2002). How well do antenatal clinic (ANC) attendees represent the general population? A comparison of HIV prevalence from ANC sentinel surveillance sites with a population-based survey of women aged 15–49 in Cambodia. *International Journal of Epidemiology* 31, 449–455.
- Stover, J. (2004). Projecting the demographic consequences of adult HIV prevalence trends: the Spectrum projection package. *Sexually Transmitted Infections* 80(Suppl I), i14 – i18.
- Stover, J., N. Walker, N. C. Grassly, and M. Marston (2006). Projecting the demographic impact of AIDS and the number of people in need of treatment: updates to the Spectrum projection package. *Sexually Transmitted Infections* 82(Suppl III), iii45 – iii50.
- UNAIDS Reference Group on Estimates, Modelling and Projections (2002). Improved methods and assumptions for estimation of the HIV/AIDS epidemic and its impact: Recommendations of the UNAIDS reference group on estimates, modelling and projections. *AIDS* 16(9), W1–W14.
- Zaba, B., L. M. Carpenter, J. T. Boerma, S. Gregson, J. Nakijingi, and M. Urassa (2000). Adjusting ante-natal clinic data for improved estimates of HIV prevalence among women in sub-Saharan Africa. *AIDS* 14, 2741–2750.
- Zaba, B., M. Marston, R. Isingo, M. Urassa, and P. D. Ghys (2004). How well do cross-sectional population surveys measure HIV prevalence? In *XV International AIDS Conference, Bangkok, 11–16 July, 2004*.