



# SPRING 2021 SEMINAR SERIES

VIRTUAL WEBINARS ON FRIDAYS  
12:30 PM - 1:30 PM (PACIFIC TIME)



**April 2 | Frauke Kreuter, LMU Munich/University of Maryland**

Partnering with a Global Platform to inform Research and Public Policy-making: What needs to be in place to make a Global COVID-19 Survey work?

[Click here to register](#)



**April 9 | Shakira Suglia, Emory University**

Childhood Adversity as a Contributor to Disparities in Cardiovascular Disease

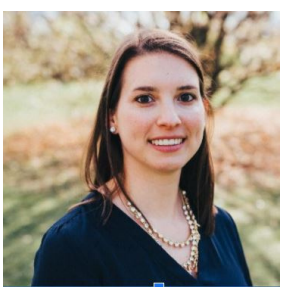
[Click here to register](#)



**April 16 | Mandy Fretts, UW Seattle, Department of Epidemiology**

Better Understanding Diet & Cardio-Metabolic Health in American Indians

[Click here to register](#)

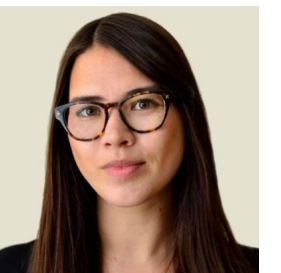


**April 23 | Alejandra Ros Pilarz, University of Wisconsin-Madison**

Understanding Trends in Mothers' Work Schedules in the U.S., 1989-2017

*Co-sponsored with West Coast Poverty Center*

[Click here to register](#)



**April 30 | Patricia Louie, UW Seattle, Department of Sociology**

Do Racial Differences in Coping Resources Explain the Black-White Paradox in Mental Health? A Test of Multiple Mechanisms

[Click here to register](#)



**May 14 | Carl Schmertmann, Florida State University**

Estimating Total Fertility from the Shape of the Age Pyramid: Bayesian Models and Applications

[Click here to register](#)



**May 21 | Karen Snedker, Seattle Pacific University**

Tents in Seattle: Sanctioned and Unsanctioned Tent Encampments

[Click here to register](#)



**May 28 | Panel: Issues of Fraud in Research**

Panelists: Melissa Simone (University of Minnesota, Department of Psychiatry), Danielle Woodward (UW Social Work), TBD ()

Moderated by: TBD

[Click here to register](#)



**June 4 | CSDE Closing Reception**

[Click here to register](#)

VIRTUAL WEBINARS ON FRIDAYS  
12:30 PM - 1:30 PM (PACIFIC TIME)



MORE INFORMATION AT  
[CSDE.WASHINGTON.EDU/NEWSEVENTS/SEMINAR-SERIES](https://csde.washington.edu/newsevents/seminar-series)